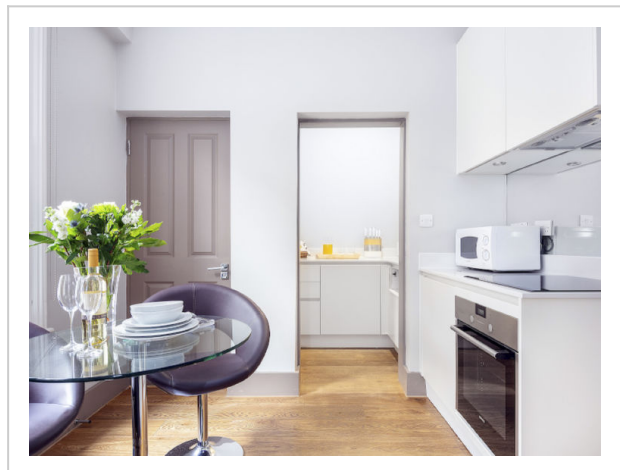
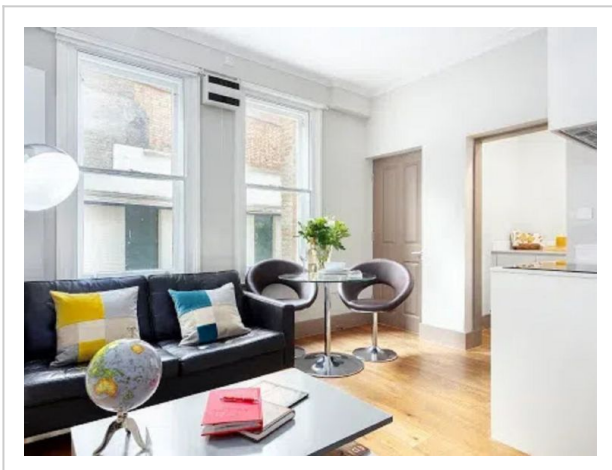
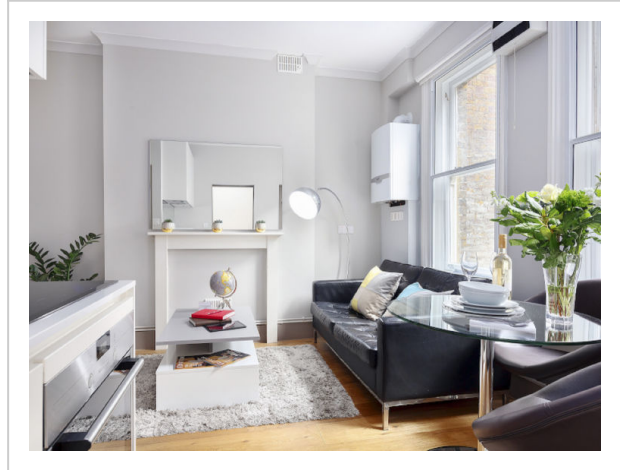


Cleveland Residences, Fitzrovia, London West End, Greater London, United Kingdom, W1T 4HY



Address: London West End, Greater London, United Kingdom, W1T 4HY

Bedrooms: 1 Bathrooms: 1

Outside

Modern apartment block "Cleveland Residences, Fitzrovia". In the centre of London, in a central position. In the complex: WiFi, laundry (extra). Room cleaning weekly (included). Grocery, bar 100 m, bus stop "Goodge Street" 200 m, railway station "Euston" 3 km, underground station "Goodge Street" 200 m. Nearby attractions: Barbican Cultural Centre 6 km, St. Paul's Cathedral / Tate Modern 4 km, Buckingham Palace 4 km, Piccadilly Circus 2 km, Tower of London & London Bridge 7 km, London Eye 5 km. Please note: baby equipment on request (extra), childminding (extra). The photograph shows a typical example.

Inside

"Cleveland Residences, Fitzrovia", 2-room apartment 40 m2, on the upper floor. Modern and stylish furnishings: open living/dining room with dining table and TV (flat screen). 1 double bedroom with 1 double bed and bath/shower/WC. Open kitchen (4 hot plates, oven, dishwasher, toaster, kettle, freezer, combination microwave). Heating. Facilities: washing machine, dryer, baby cot for up to 2 year olds (extra), hair dryer. Internet (WiFi, free). Please note: suitable for families. TV only EN. Smoke alarm, fire extinguisher.

Amenities:

- Double Glazed Windows
 - Extrabeds
 - Led Bulbs
 - No Disposable Tableware
 - Public Transport
 - Recycling Station
 - Water Efficient Showers
 - Water Efficient Toilets
 - Bath And Shower
 - Central
 - Cleaning
 - Dishwasher
 - Tumbler
 - Metropolis
 - Oven
 - Familyfriendly Summer
 - Shower
 - Nightlife Summer
 - Modern
 - Washingmachine
 - Familyfriendly Winter
 - Winedine
 - Nightlife Winter
 - Fire Extinguisher
 - Fridge
 - Hair dryer
 - Heating
 - Interior Modern
 - Internet
 - Kettle
 - Open Kitchen
 - Freezer
 - TV
 - Smoke Alarm
 - Stove
 - Toaster
 - Wlan
-