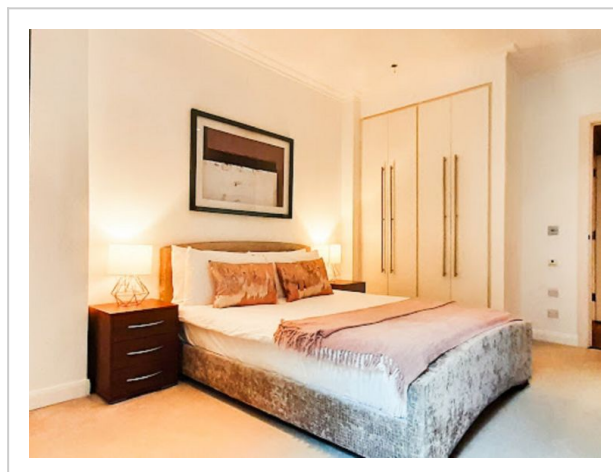
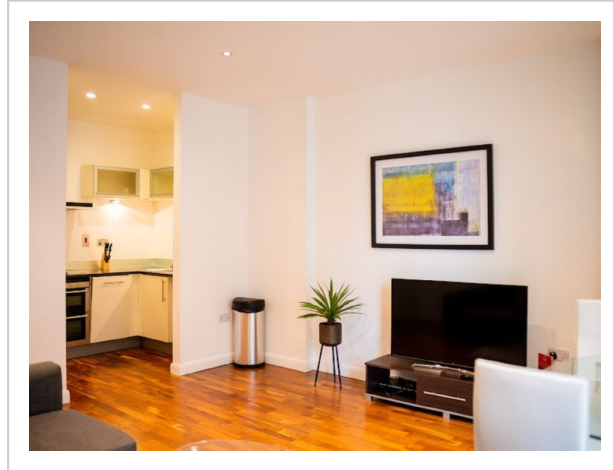
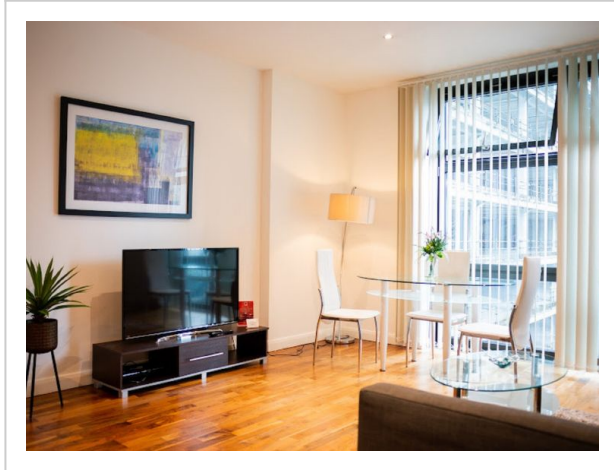


Discovery Dock, Canary Wharf, Greater London, United Kingdom, E14 9LT



Address: Canary Wharf, Greater London, United Kingdom, E14 9LT

Bedrooms: 1 Bathrooms: 1

Outside

Modern apartment block "Discovery Dock". On the outskirts, 2 km from the centre of Canary Wharf, in a central position. In the house: reception, restaurant, bar, bistro, internet access, WiFi, shopping facilities, lift, central heating system, air conditioning, laundry (extra). Room cleaning weekly (included). Breakfast (extra). Bus stop "Cuba Street" 330 m, railway station "Canary Wharf" 2 km, underground station "Canary Wharf" 2 km. Nearby attractions: Billingsgate market 2 km, O2 Arena 4 km, London Eye 9 km, Greenwich market 8 km, Tower of London & Tower Bridge 5 km, Buckingham Palace 10 km. Please note: reception open 09:00-17:00 hrs. Baby equipment (extra), childminding

(extra). Please note: 24hr guard. Guarded residence. The photograph shows a typical example.

Inside

"Discovery Dock", 2-room apartment 40 m2. Modern and stylish furnishings: living/dining room with dining table and TV (flat screen). 1 double bedroom with 1 double bed and bath/shower/WC. Open kitchen (4 hot plates, oven, dishwasher, toaster, kettle, microwave, freezer). Heating. Facilities: washing machine, dryer, iron. Internet (WiFi, free). Please note: non-smoking house. TV only EN.

Amenities:

- | | |
|--------------------|--------------------|
| • Extrabeds | • Modern |
| • Aircondition | • Washingmachine |
| • Bath And Shower | • Nightlife Winter |
| • Breakfast | • Electric Iron |
| • Central | • Fridge |
| • Cleaning | • Heating |
| • Dishwasher | • Interior Modern |
| • Tumbler | • Internet |
| • Elevator | • Kettle |
| • Metropolis | • Open Kitchen |
| • Microwave | • Freezer |
| • Oven | • Nonsmoking |
| • Reception | • TV |
| • Restaurant | • Stove |
| • Shower | • Toaster |
| • Nightlife Summer | • Wlan |
-