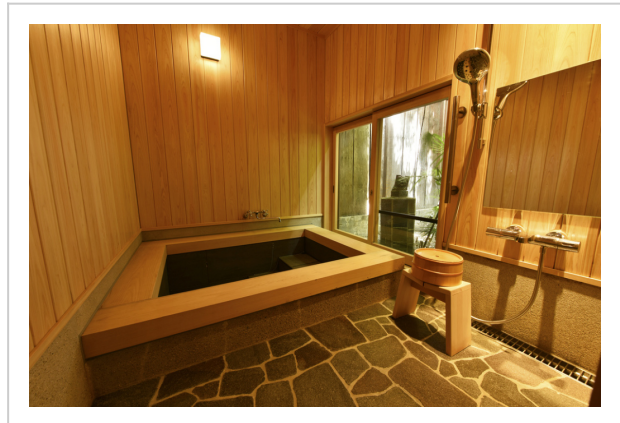
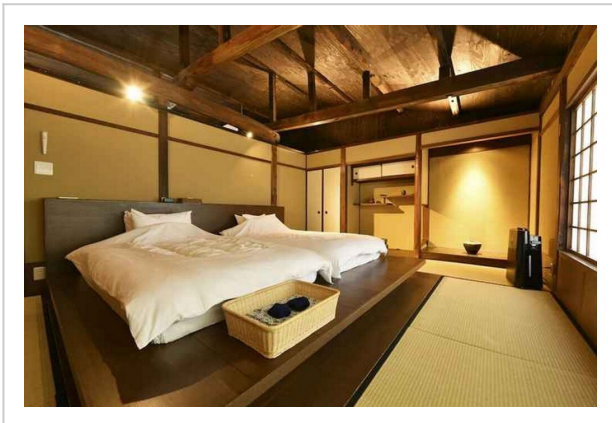
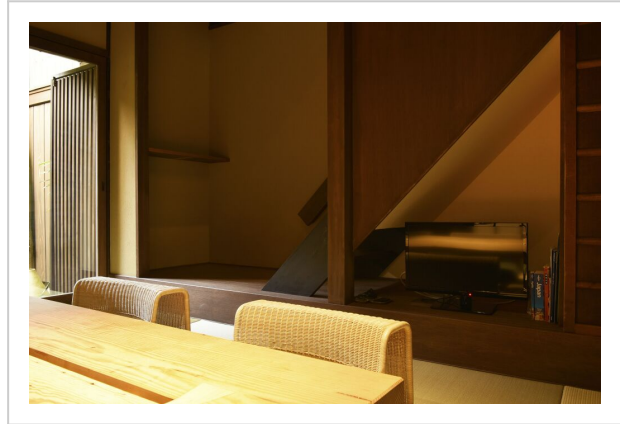
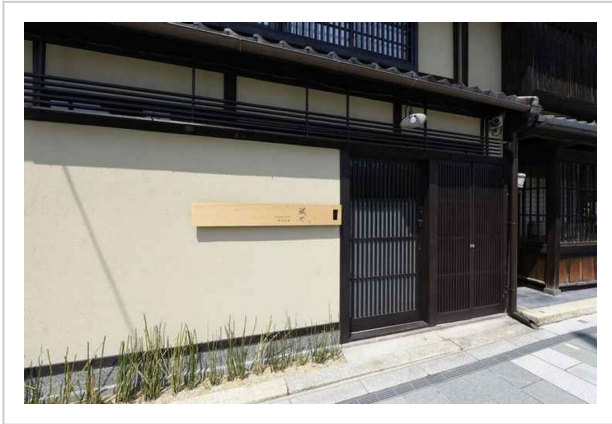


## Kuraya Kiyomizu-Gojo--Double Cottage full double bed



**Address: 6-502 Gojobashihigashi, Higashiyama-ku, Kyoto**

Bedrooms: 3 Bathrooms: 2

### Location

Active or laid-back vacation, it's up to you to decide. Cottage «Kuraya Kiyomizu-Gojo» is located in Kyoto. This cottage is located in 3 km from the city center. You can take a walk and explore the neighbourhood area of the cottage — Kyoto National Museum, Sanjusangendo Temple and Kenninji Temple.

### At the cottage

Want to be always on-line? Wi-Fi is available. At the guests' disposal, there's also a safe-deposit box. The staff of the cottage will be happy to talk to you in English, Japanese and Korean.

## Room amenities

In the room, there is a shower and a TV. Please note that the listed services may not be available in all the rooms.

---

### Amenities:

- Air conditioning
  - Smoke-free property
  - Heating
  - Garden
  - Express check-out
  - All Spaces Non-Smoking (public and private)
  - No elevators
  - Non-smoking rooms
  - Fridge
  - TV
  - Hairdryer
  - Shower/Bathtub
  - Bathtub
  - Shower
  - Wardrobe/Closet
  - Toiletries
  - Safe-deposit box
  - Luggage storage
  - Breakfast
  - Microwave oven
  - Kettle
  - Free Wi-Fi
  - Beach/pool towels
-