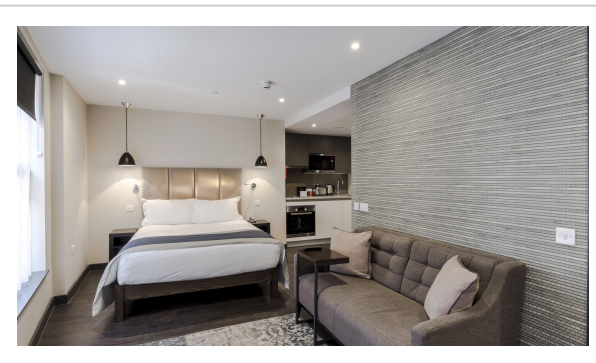
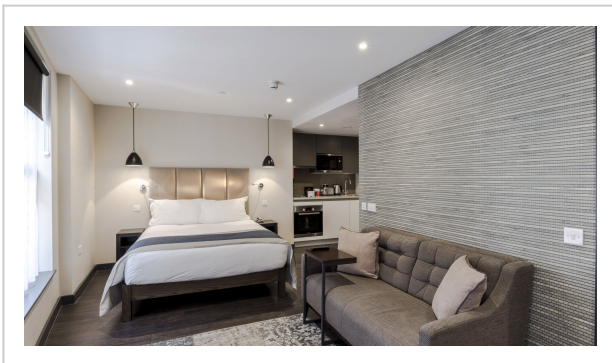
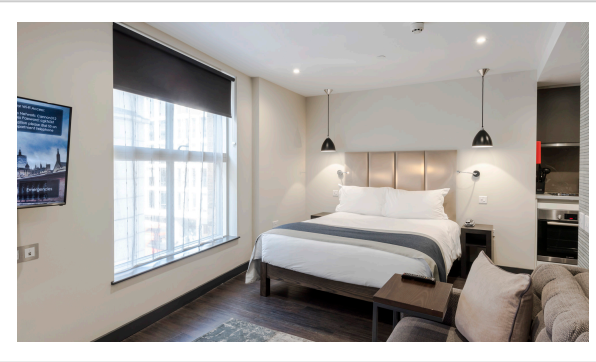
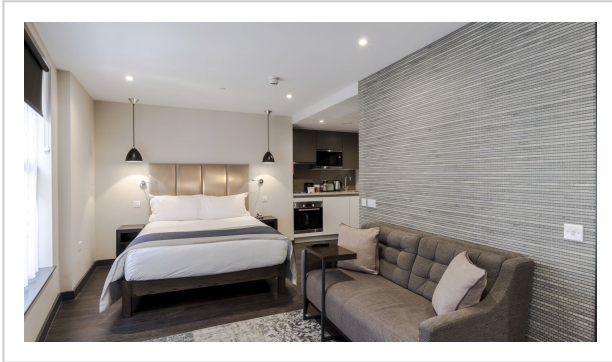


1 Bedroom Apartment Autumn Sky



Address: Autumn Sky

Bedrooms: 1 Bathrooms: 1

Autumn Sky

Situated in the City of London, this aparthotel is one for business travellers who need to be up and out early in the morning for meetings in one of the many skyscrapers that surround this address. It certainly errs on the side of functional, but that's not to say there aren't touches that will have you nodding your head appreciatively. The large windows let in lots of natural light, for instance, while the wall-mounted smart TV also has an Apple TV box so you can kick back and destress with your favourite boxset. There's a twenty-four-hour concierge service in the building as well that will try to meet guests' requests, as well as a communal gym to get yourself pumped before the big pitch. The Bank of England is just over five minutes' walk up the road, but St Paul's Cathedral takes the same amount of time in the opposite direction if you have time to spare for a spot of sightseeing.

Amenities:



- Black Out Blinds
 - Rain Shower
 - Luxury Toiletries
 - Multiple Sets of Keys
 - Dishwasher
 - Microwave
 - Air conditioning
 - Central Heating
 - Washing machine
 - Dryer
 - Buzzer / Wireless Intercom
 - Lift Access
 - TV
 - Wi fi
 - Hair dryer
 - Iron
 - Desk / Workplace
 - Gym
 - Ironing Board
 - Laptop Friendly Workspace
 - Cot / Crib
 - Fridge
 - Oven
 - Stove
 - Kitchen
 - Smoke Detector
 - Fire Extinguisher
 - Toiletries
 - Hangers
 - Coffee Maker
 - Kitchen Utensils
 - Cooking Essentials
 - Pets Allowed
-